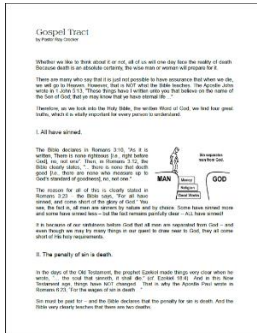


# Guide to Tracts

## Gospel



### Gospel Tract

**Key Message:** A comprehensive Gospel message presented in a simple manner with visuals to highlight death because of sin and how Christ died for our sins.

**Who should receive this tract?** Unbelievers

## Seasonal

### Lunar New Year



### 福 (Blessed)

**Key Message:** This Lunar New Year tract is designed to present the Gospel using the Chinese character 福, an iconographic record of the original blessedness of man preserved in the Chinese character.

**Who should receive this tract?** Unbelievers



**船 (Boat)**

**Key Message:** This Lunar New Year tract is designed to present the Gospel using the Chinese character 船, an iconographic record of God’s preservation of eight souls - Noah’s family - safe in the Ark.

**Who should receive this tract?** Unbelievers



**先 (First)**

**Key Message:** This Lunar New Year tract is designed to present the Gospel using the Chinese character 先, an iconographic record of the first man.

**Who should receive this tract?** Unbelievers



**祥 (Happiness)**

**Key Message:** This Lunar New Year tract is designed to present the Gospel using the Chinese character 祥; an iconographic record of the happiness of Abel preserved in the Chinese character.

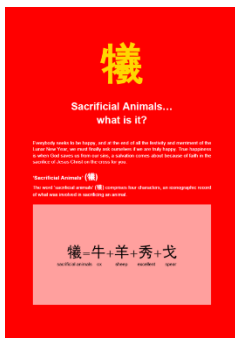
**Who should receive this tract?** Unbelievers



**義 (Righteousness)**

**Key Message:** This Lunar New Year tract is designed to present the Gospel using the Chinese character 義, an iconographic record of the righteousness that the Lamb of God clothes us with.

**Who should receive this tract?** Unbelievers



**犧 (Sacrificial Animals)**

**Key Message:** This Lunar New Year tract is designed to present the Gospel using the Chinese character 犧, an iconographic record of what was involved in sacrificing an animal.

**Who should receive this tract?** Unbelievers



**靈 (Spirit)**

**Key Message:** This Lunar New Year tract is designed to present the Gospel using the Chinese character 靈, an iconographic record of the Spirit of God performing the work of creation.

**Who should receive this tract?** Unbelievers



## 造 (To Create)

**Key Message:** This Lunar New Year tract is designed to present the Gospel using the Chinese character 造, an iconographic record of the creation of the first man.

**Who should receive this tract?** Unbelievers

# Easter



## Christ Sacrificed for Us

**Key Message:** This tract shows what the world calls “Easter” really means.

**Who should receive this tract?** Unbelievers, backsliding Christians

# Christmas



## Christmas - What Is the Real Reason for the Season?

**Key Message:** This tract drives home the true meaning of Christmas - the love of God in giving us His only begotten Son Jesus Christ. It points the reader to the reality of death and the cause of death, which is sin, and helps him see that the solution to the problem of sin and death is Jesus Christ the Saviour.

**Who should receive this tract?** Unbelievers

**Level of Difficulty:** Easy

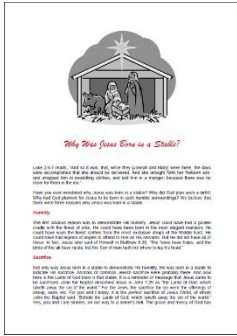


## The Three Houses of Christmas

**Key Message:** This tract challenges the reader to seriously consider Christ, and to think about whether there is room for Jesus in his heart.

**Who should receive this tract?** Christians and unbelievers

**Level of Difficulty:** Difficult



**Why Was Jesus Born in a Stable?**

**Key Message:** This Christmas tract tells us that Jesus was born in a stable to demonstrate His humility, indicate His sacrifice, and exhibit His accessibility. Jesus Christ is still accessible today. We can receive forgiveness of sin by coming to Him, who will not cast us out.

**Who should receive this tract?** Unbelievers

**Level of Difficulty:** Intermediate